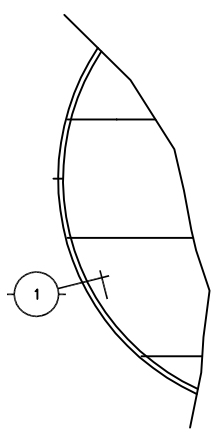


NOTE:  
 PROVIDE STRUCTURAL SUPPORT  
 AT ALL FASTENERS

SOFFIT: SUGGEST RECESSING  
 SKYCEILING A MINIMUM OF  
 2"-3" [51-76mm]



1 PERIMETER EDGE DETAIL  
 ELEVATOR TO CURVED PERIMETER ANGLE

**The Sky  
 Factory**  
 PO BOX 1177  
 Fairfield, Iowa 52556  
 Phone: 641-472-1747  
 www.TheSkyFactory.com

PRODUCT  
**CIRCULAR T5 LUMINOUS SKYCEILING  
 W/ PVC PERIMETER**

DRAWN BY	RVS	DATE CRTD
REVISIONS		
DATE		COMMENTS
05/11/07	JE	
08/27/07	JE	
02/06/08	JE	METRIC

**D1**  
 SHEET 1 OF 1